

# Scheherazade

1. Satz

94

Allegro non troppo  $\text{♩} = 56$

Nikolai Rimsky-Korsakow

op. 35

**[C] Solo**

**[p]** 3 3 3 3 3

**96**

**99** **[D]** **f**

**[G] Solo**

**173** **[p]** 3 3 3 3 3

**176**

**179** **[H] Tutti** **f**

## 2. Satz

Recit. Lento

[1] Solo *espressivo*

[3] *rit. assai* *ten.* **Andantino**

Cad.

## 3. Satz

Recit. Lento

[142] *espressivo*

[145] *Cadenza*

*p* *pp*

[146] **Tempo I**

**L**

[149]

[152]

*cantabile, con forza*

[155] *dim.* *Solo a tempo* *Tutti* *ff*

**Allargando assai.**

**M**

[159] *colla parte*

[163] *colla parte*

## Sinfonie Nr. 9

## 2. Satz

Violine I und II

Molto vivace  $\text{♩} = 116$ 

Ludwig van Beethoven

I *ff* *sf* Pk. *ff* *ff*

II *ff* *sf* *ff* *pp* *V*

9 Br. *pp*

*simile* *sempre pp*

17 *pp* *simile* *sempre pp*

25 *sempre pp*

33

41

*cresc.*

*cresc.*

49

*ff*

*ff*

78

*p*

*p*

531 Coda

*pp*

*sempre pp*

*cresc.*

*pp*

*cresc.*

*string. il tempo*

*string. il tempo*

542

*ff*

*f*

*f*

*f*

*fp*

*ff*

*f*

*f*

*f*

*fp*

**Presto (♩ = 116)**



## Violine II

Sehr mäßig bewegt

Tempo I



## Die Zauberflöte

Ouvertüre  
Violine I und IIWolfgang Amadeus Mozart  
KV 620

Adagio Allegro

I

II

20

25

30

35

40

*p* *f* *p* *f* *p* *f* *p* *f*

*p* *f* *p* *f* *p* *f* *p* *f* *sfp*

*p* *sfp* *sfp* *f*

*sfp* *sfp*

*p* *f* *p* *f*

*sfp* *tr* *p* *f* *p*

*tr* *sf* *sf* *p* *f*

*sfp* *sfp* *p* *f*

## Symphonie Nr. 2

C - Dur / C major

## 2. Satz: Scherzo

Violine I

Robert Schumann

op. 61

Allegro vivace ♩ = 144

Musical score for Violin I, Scherzo, Symphony No. 2 by Robert Schumann. The score is in 2/4 time, C major, and consists of 45 measures. It features various dynamics (*mf*, *f*, *p*, *cresc.*, *poco rit.*, *a tempo*) and articulations (accents, slurs, fingerings). A flute part enters at measure 12.

Measures 1-4: *mf*, *Allegro vivace*, ♩ = 144. Measure 5: *cresc.*. Measure 9: *f*, *mf*. Measure 12: *p*, Fl. (Flute). Measure 16: *p*. Measure 20: *poco rit.*, *a tempo*. Measure 25: *f*, *p*. Measure 29: *cresc.*. Measure 33: *f*. Measure 37: *f*. Measure 41: *f*. Measure 45: *p*.



80 *mf*

84

88 361 *f* *sempre*

362 0 1 2 1 1 3 2 3 4 0 4 0 1 1

366

370 3 3

374 4 0 1 1

378 4

382 1 0 1

386 3 0 4 4

390 3 1

394 1

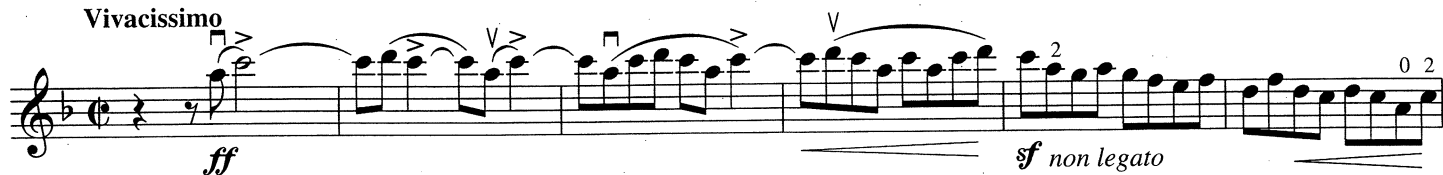
Detailed description: This page contains a musical score for a single melodic line, spanning measures 80 to 394. The notation is in treble clef with a key signature of one sharp (F#). The score is divided into systems of five staves each. Measure numbers are placed at the beginning of each staff. Performance markings include *mf* (mezzo-forte) at measure 80, *f* (forte) at measure 361, and *f sempre* (forte sempre) at measure 361. Fingering numbers (0-4) are indicated above many notes. There are also some accidentals (sharps and naturals) and a double bar line with repeat dots at measure 361. The piece concludes with a final chord in measure 394.

## Die verkaufte Braut

Ouvertüre  
Violine I und II

Bedřich Smetana

Vivacissimo



33

*sf* *sf* *sf p subito* *pp*

38

43

48

*sempre p*

53

58

63

68 Violine II

73

78

*sempre p*

83

88

93

*cresc.* *poco a poco cresc.*

98

**A** *ff sf sf sf sf > sf f marc.* *pizz.*

402 2 1 1 2 1 1

*pp*

406

410 *p* *poco a poco cresc.*

414 *cresc.*

419 *f*

423 *cresc.* *ff* *sf*

Detailed description: This page contains a single melodic line in B-flat major, spanning measures 402 to 423. The notation is in treble clef with a key signature of two flats. Measures 402-405 feature a descending eighth-note scale starting on G4, with fingering 2 1 1 and 2 1 1. Measure 402 is marked *pp*. Measures 406-409 continue the descending scale. Measure 410 begins an ascending eighth-note scale starting on F4, marked *p* with the instruction *poco a poco cresc.* Measures 411-413 continue the ascending scale. Measure 414 continues the ascending scale, marked *cresc.* Measures 415-418 continue the ascending scale. Measure 419 continues the ascending scale, marked *f*. Measures 420-422 continue the ascending scale. Measure 423 concludes with a final chord of B-flat major (B-flat and F), marked *cresc.*, *ff*, and *sf*, followed by a double bar line.

# Don Juan

Violone I und II

Richard Strauss  
op. 20

**Allegro molto con brio**  $\text{♩} = 84$

Violine I und II

Allegro molto con brio  $\text{♩} = 84$

Richard Strauss  
op. 20

The image shows the first ten measures of the first movement of Richard Strauss's 'Ein Heldenleben', for Violins I and II. The tempo is 'Allegro molto con brio' with a quarter note equal to 84 beats per minute. The key signature is three sharps (F#, C#, G#). The score is written for two staves, Violin I and Violin II. Both staves begin with a forte (ff) dynamic. The music features a driving eighth-note pattern in the right hand and a more complex, often triplet-based, pattern in the left hand. There are various articulations such as accents, staccato marks, and slurs. The first measure has a triplet of eighth notes in the right hand and a triplet of eighth notes in the left hand. The second measure has a triplet of eighth notes in the right hand and a triplet of eighth notes in the left hand. The third measure has a triplet of eighth notes in the right hand and a triplet of eighth notes in the left hand. The fourth measure has a triplet of eighth notes in the right hand and a triplet of eighth notes in the left hand. The fifth measure has a triplet of eighth notes in the right hand and a triplet of eighth notes in the left hand. The sixth measure has a triplet of eighth notes in the right hand and a triplet of eighth notes in the left hand. The seventh measure has a triplet of eighth notes in the right hand and a triplet of eighth notes in the left hand. The eighth measure has a triplet of eighth notes in the right hand and a triplet of eighth notes in the left hand. The ninth measure has a triplet of eighth notes in the right hand and a triplet of eighth notes in the left hand. The tenth measure has a triplet of eighth notes in the right hand and a triplet of eighth notes in the left hand.



30 *fff* *Ob.* *Vl. I / II unisono*

34 *Fl.*

50 *Molto vivo* *f* *p*

54 *p* *cresc.*

58 *ff*



## Der Rosenkavalier

Erster Aufzug  
Violine I

Richard Strauss

Sehr schnell  
Vivace

76 *f*

77 *cresc.* *ff* *mf* *p*

78 I. und II. Viol. *mf* *f*

79 VI. I. *espr.* *mf* *cresc.*

80 *f* *p* *f*

81 *mf* *p* *espr.* *p* *dim.*

82 *espr.* *pp* *cresc.* *f*